



Manual Type 1.0.0.3-RF

Viking E-10 or E-40
with C-2000B controller

For Models _____

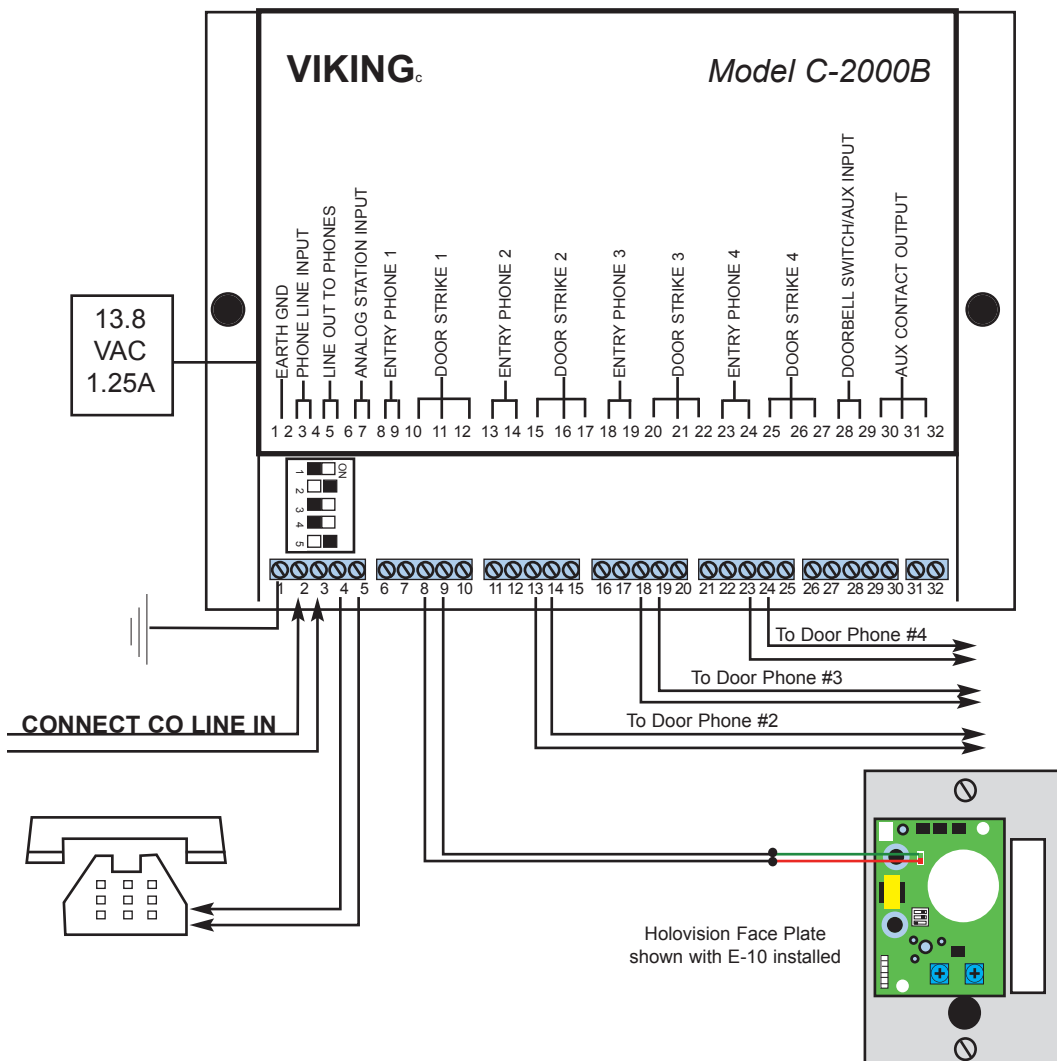
Specifications

Communication

Viking E-10 and E-40 Doorboxes use "half-duplex" communication, allowing for high speaker and microphone volume, without the possibility of feedback. When used with the Viking C-2000 controller, they system has the capability of communicating with 4 doors.

Access Control

Viking C-2000 can open 4 doors.



INSTALLATION INSTRUCTIONS

501 E. Goetz Ave.
Santa Ana, Ca 92707

www.eholovision.com

Ph. 714-434-6904
Fax 800-362-0002

HOLOVISION

Doorphone Programming

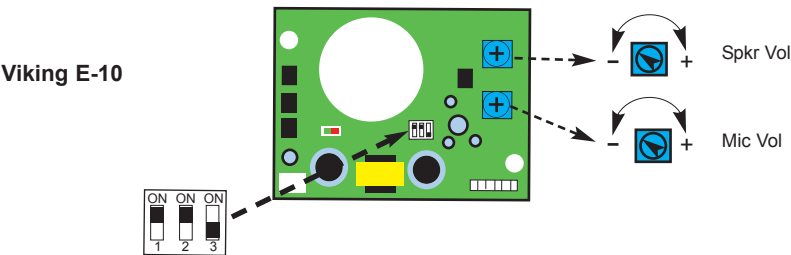
Instructions for E-10 and E-40 Doorphones

Microphone Volume

In certain noisy locations (traffic or wind), the microphone volume may need to be decreased. A symptom of this is one-way talk path, in which the distant party cannot be heard over the speaker. A “**MIC VOL**” adjustment is provided on the doorphone for increasing or decreasing the microphone volume.

Speaker Volume

The “**SPKR VOL**” pot can be adjusted to increase or decrease the speaker volume to the desired level.



Dip Switch Settings

DIP Switch	Position	Description
1	ON	Auto Answer - Doorphone answers when incoming call is detected.
2	ON	Call Timer - See E-10 manual for a description of this feature. Recommended setting is “ON”. This is the factory default.
3	OFF	Programming Mode - E-10 is factory pre-set, and normally does not need re-programming. Refer to E-10 manual (Viking document which is included) for details

Holovision recommends the default settings on the dip switches. See the E-10 or E-40 manual for more information.

Instructions for C-2000 Controller

The C-2000 controller is factory set to work right out of the box. If customization of the default settings is required, see the steps listed below. Refer to the C-2000 manual for additional options

Access Programming Mode (Local Access)

STEP	ACTION
1	Move DIP switch 2 from OFF to ON position.
2	Come off-hook with any house phone connected to terminals 4 & 5 LINE OUT TO PHONES .
3	Double beep indicates accessing the programming mode.
4	You can now program the C-2000A. The features covered in this manual are Maximum Doorphone Ring Count and Door Strike Activation Time . For information on programming other features see the Viking C-2000 manual.
5	Move DIP switch 2 back to the OFF position.

Maximum Doorphone Ring Count - Factory Default is 5 Rings

STEP	ACTION
1	Follow steps 1-3 from " Access Programming Mode " (above).
2	At "double beep" enter desired number of rings, followed by #61. Example: For 7 rings, enter "07#61".
3	Hang up the phone.

Program Gate Strike Relays - Factory Default is 0.5 Seconds

STEP	ACTION
1	Follow steps 1-3 from " Access Programming Mode " (above).
2	At "double beep" enter desired number of seconds of strike activation, followed by: #19 for Gate 1, #29 for Gate 2, #39 for Gate 3, #49 for Gate 4 Examples: Set Gate 1 for 8 seconds (08#19); Set Gate 3 for 15 seconds (15#39)
3	Hang up the phone.

Operation Instructions for C-2000B Controller

ANSWER A CALL FROM DOORBOX

When the phones ring, pick up a phone to be connected to the visitor.

PLACING CO LINE CALLS ON HOLD (CALL WAITING)

If a phone call is in progress, and a doorbox is activated, one to four beeps will be heard (indicating which doorphone is calling). To place the call in progress on hold and speak to the visitor, push #. When you want to return to the original phone call, push #.

ACTIVATING A DOORSTRIKE OR OPENING A GATE

When a call is in progress, press ** to open the gate and return to the original call. If you do not want to open the gate, press # to return to the original call.

Strike can be activated without the need of a "call-first" to the entry phone. Refer to the list below for codes for specific entry relays.

Entry Relay	Strike Code
1	#1**
2	#2**
3	#3**
4	#4**

