

HOLOVISION

INSTALLATION INSTRUCTIONS

Manual Type 1.0.0.4 RF

Viking E-10 or E-40 with PAN-1

For Models

100-VIK	202-VIK	505-VIK
102-VIK	300-VIK	506-VIK
106-VIK	303-VIK	
200-VIK	500-VIK	

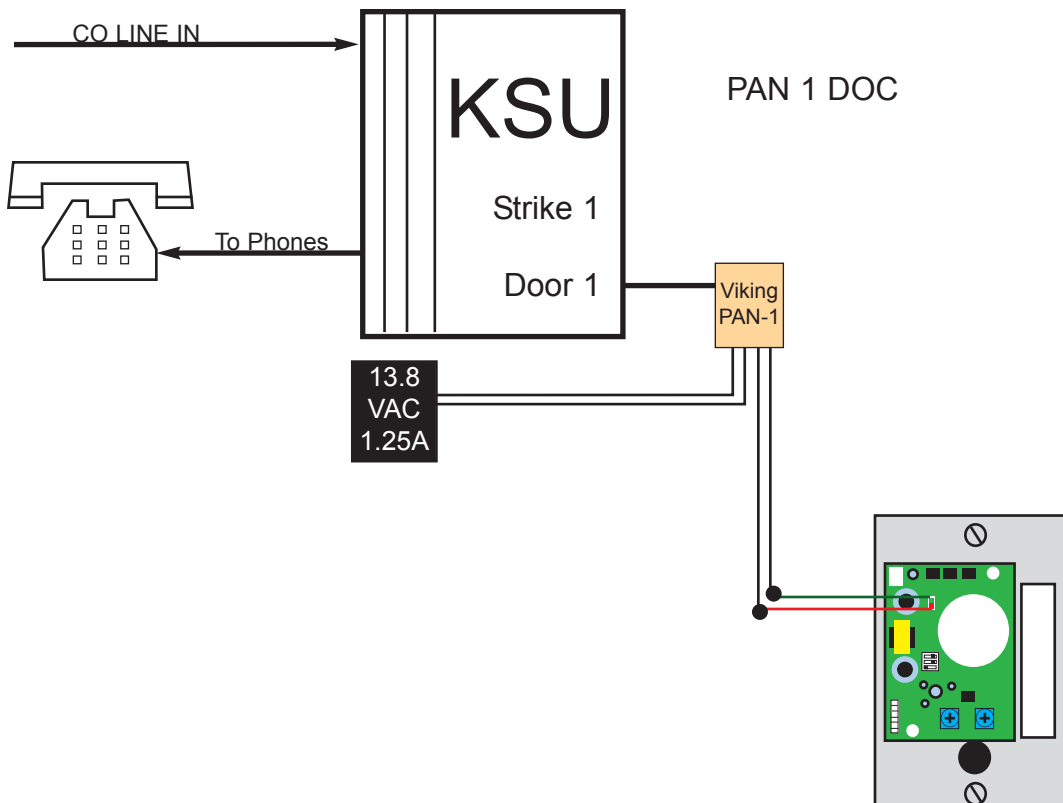
Specifications

Communication

Viking E-10 or E-40 Doorbox uses "half-duplex" communication, allowing for high speaker and microphone volume, without the possibility of feedback. Using Viking "PAN-1" adapter, E-10 plugs directly into doorphone card of Panasonic KSU.

Access Control

Panasonic Doorphone Card performs this function.



501 E. Goetz Ave.
Santa Ana, Ca 92707

www.eholovision.com

Ph. 714-434-6904
Fax 800-362-0002

HOLOVISION

Doorphone Adjustments and Programming

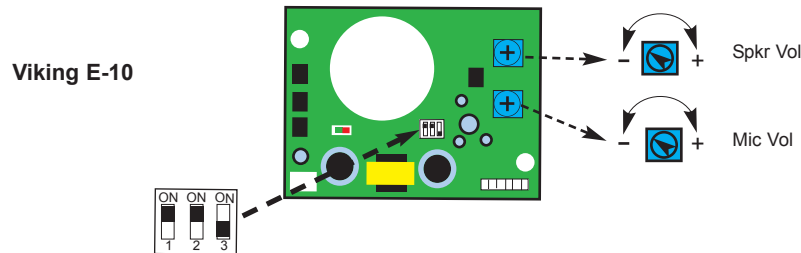
Instructions for E-10 and E-40 Doorphones

Microphone Volume

In certain noisy locations (traffic or wind), the microphone volume may need to be decreased. A symptom of this is one-way talk path, in which the distant party cannot be heard over the speaker. A **"MIC VOL"** adjustment is provided on the doorphone for increasing or decreasing the microphone volume.

Speaker Volume

The **"SPKR VOL"** pot can be adjusted to increase or decrease the speaker volume to the desired level.



Dip Switch Settings

DIP Switch	Position	Description
1	ON	Auto Answer - Doorphone answers when incoming call is detected.
2	ON	Call Timer - See E-10 manual for a description of this feature. Recommended setting is "ON". This is the factory default.
3	OFF	Programming Mode - E-10 is factory pre-set, and normally does not need re-programming. Refer to E-10 manual (Viking document which is included) for details

Holovision recommends the default settings on the dip switches. See the E-10 or E-40 manual for more information.

Operation Instructions

ANSWER A CALL FROM DOORBOX

When the phones ring, pick up a phone to be connected to the visitor.