

## GATE ENTRY SYSTEMS FOR INTERCOMS

---



### MODEL 326-2N

- Solid brass 1/4" faceplate for phone systems and intercoms
- Face plate dimensions: 7.35" x 4.125" (h w)
- Back box dimensions: 7.625" x 4.5" x 7.75" ( h w d) p/n 9305 - 300 Series  
Gooseneck Back Box in Black Powder Coat over Stainless Steel, with carriage bolts included.(Add all available features)

### 2N SYSTEMS FEATURES

- Multifunctional devices combine audio and video intercoms
- 2N technology behind this IP outdoor intercom
- Standalone devices support direct SIP calls
- Total cyber security with HTTPS, IEEE 802.1x, SIPS, and SRTP



Gooseneck or in-wall  
mount back box  
p/n 9305

**STANDARD BRASS FINISHES:** Black Powder Coat, Brushed Chrome, Light Antique Brass, Oil Rubbed Bronze, Oil Rubbed Bronze Patina Edge, Pewter, Polished Brass, Polish Chrome, Satin Brass, Satin Nickel, White Powder Coat.

**STANDARD STAINLESS STEEL.**

## GOOSENECK POLES AND ACCESSORIES

---



### One Piece Gooseneck Mounting Pole for 300, 400, 600, 800, and 900 Series

- Goose neck is metalized (rust proofing) and powdercoated black
- Pole is constructed from 2" square steel tubing
- 1/8" wall thickness gives pole sturdy feel
- 72" overall length allows 24" to be buried in concrete
- Pole includes 2 slots to allow entrance of 3/4" PVC conduit
- Weight: 20 lbs
- Dimensions: 77x17x6 (hdw)



### Two Piece Gooseneck Pole for 300, 400, 600, 800, and 900 Series

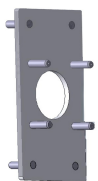
- Two piece design requires rough-in template that can be cemented in place prior to gooseneck wiring and installation.
- Pole is made of 2" square steel tubing -metalized (rust proofing) and powdercoated black
- 45" from bottom of flange to center of top tube
- 1/8" wall thickness gives pole sturdy feel
- Pole includes hand hole with cover to make pulling wire easier
- Weight: 23 lbs
- Dimensions: 50x22x10 (hdw)

**NOTE:** All Goosenecks are only offered in stainless steel over black powder coat



### Rough-in Bolts and Template for 2 Piece Goosenecks

- Plywood template is supplied with 4 stainless steel "J" bolts (1/2" diameter - 12" long) to securely anchor pole to concrete
- Template includes stainless steel nuts and washers to secure anchor bolts
- Template includes 1 1/4" PVC sweep 90 degree elbow (elbow can be rotated 360 degrees to allow installerto minimize conduit bends during rough-in)
- Template can be given to contractor to be cemented in place prior to gooseneck wiring and installation
- Design allows for a second conduit (3/4") to be run to gate motor (3/4" elbow is not included)



### Gooseneck Adaptor Plate

- Designed to allow 300, 400, 600, and 800 Series gooseneck boxes to be bolted to the smaller flange of Viking, Linear, and Doorking goosenecks
- Size:  
Large bolt pattern (mates to HoloVision boxes) 5.75" x 2.5" (hw)  
Small bolt pattern (mates to boxes by others) 2.5" x 2.5" (hw)